



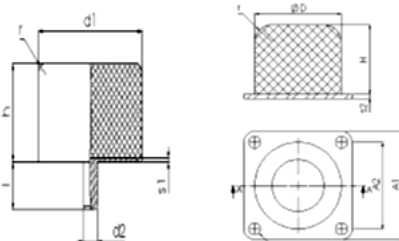
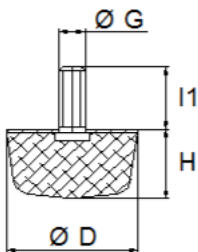
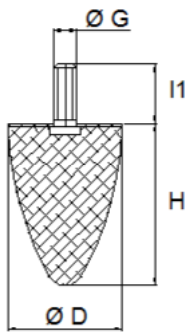
Matériaux NR variante NBR CR EPDM
Insert acier zingué

Forme DIN 95364F

Température -40° +80°

Dureté Standard 55 Sh A +5

Plan



Type A

Type B

Références	D	H	G	l1	Effort max daN	Course mm
EBP 10/10	10	10	M5	12		
EBP 20/24	20	24	M6	18	60	14
EBP 25/20	25	20	M6	18		
EBP 30/30	30	30	M8	20	140	15
EBP 30/36	30	36	M8	20	140	19
EBP 30/36	30	36	M8	20	140	19
EBP 50/58	50	50	M8 (M10)	20	330	22
EBP 50/64	50	64	M10	28	400	32
EBP 75/89	75	89	M12	33	900	47
EBP 100/85	100	85	M16	37	1200	35
EBP 115/136	115	136	M16	37		

Références	D	H	G	H	Effort Max daN	Course mm
EBK 25/17	25	17	M6	18	100	6,5
EBK 35/40	35	40	M8	23	350	5.5
EBK 40/30	40	30	M8	23		
EBK 50/18	50	18	M10	28	500	4,5
EBK 50/30	50	30	M10	28	500	4,0
EBK 75/28	75	28	M12	37		
EBK 80/30	80	30	M12	37	2000	8,5
EBK 125/45	125	45	M16	45	5000	18

Références	D	H	A1	A2	d1	G	l1	r	S1	s2	T	Course mm	Force kN	Energie Joules
EBR 4032B	40	32	50	40	5,5		23	8	2	2	8	18	15	70
EBR 5040B	50	40	63	50	6,5		28	10	3	2	10	22	24	140
EBR 6350B	63	50	80	63	6,5		28	12.5	4	3	10	28	37.5	280
EBR 8063B	80	63	100	80	9		37	18	5	3	12	35	60	560
EBR 10080B	100	80	125	100	9		36	20	6	4	12	44	95	1120
EBR 125100B	125	100	160	125	11		36	25	6	4	16	55	150	2240
EBR 160125B	160	125	200	160	11		44	32	8	6	16	68	240	4400
EBR 200160B	200	160	250	200	13		44	40	8	6	18	38	375	8800